



2 0 2 4 / 2 0 2 5

F E S T I V E

season

O F F E R

NOBU HOTEL
WARSAW

Irasshaimase!

Dive into the festive season at Nobu Hotel Warsaw, where we craft exclusive celebrations from our cherished traditions. Begin your holidays with custom pre-Christmas events in our elegant spacer or relish our special Festive Afternoon Tea paired with Champagne or Sake and Japanese delicacies. Experience the magic of Nobu Sundays, a prelude to holiday joy with your nearest and dearest.

This festive season, savor our celebrated Omakase menus and let us take care of the culinary wonders. Ring in New Year at the iconic Nobu Restaurant for an unforgettable welcome to 2025. Still searching for the perfect gift? Our e-shop awaits with thoughtful selections!

Warmest festive wishes and a bright New Year 2025 from all of us at Nobu Hotel Warsaw. Join us for a season brimming with joy, connection and memorable celebrations.

Best season's greetings!

Stefan Bauer

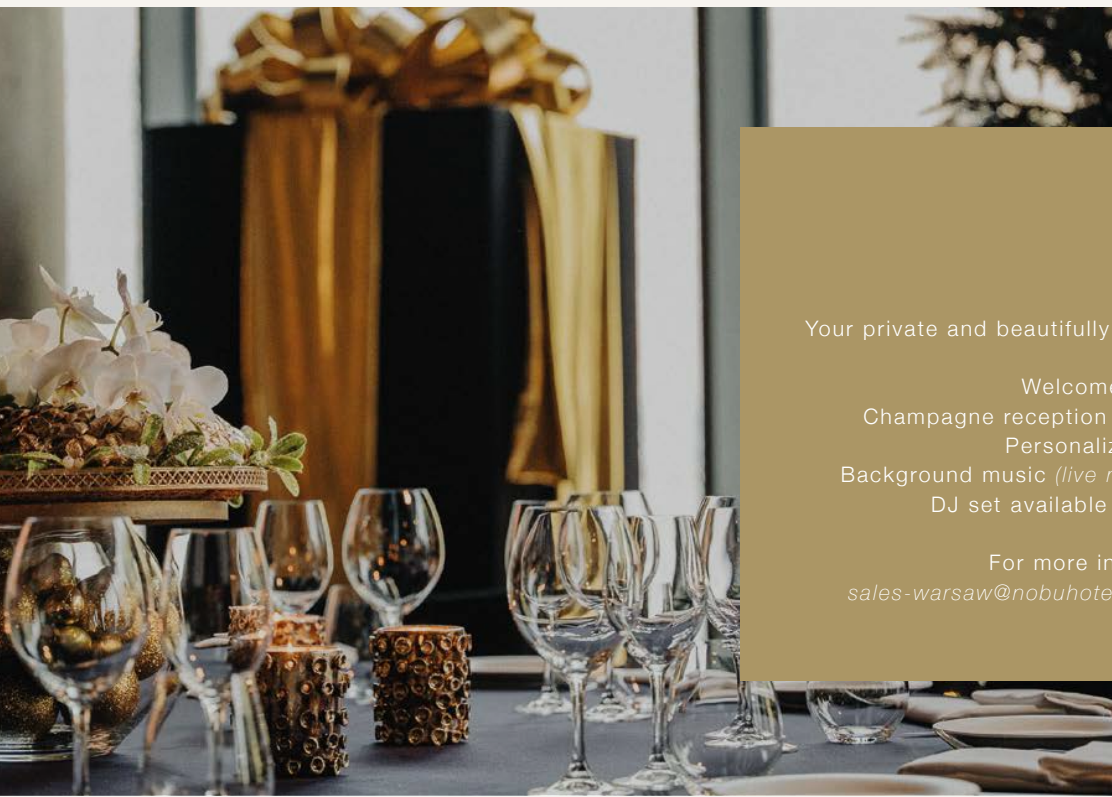
Stefan Bauer
General Manager

4	Conference and Events
6	Nobu Sundays
8	Champagne or Sake Afternoon Tea at Sakebar by Nobu
9	Christmas Concert at Sakebar by Nobu
10	Festive Omakase Menu
12	Alpine Omakase Experience
14	Private Dining Rooms
16	New Year's Eve at Nobu Restaurant
18	New Year's Day Brunch
19	Accommodation Offers
20	Gift Ideas

Conference

A N D E V E N T S

Searching for the ideal backdrop for your corporate festive celebration, or simply in need of extra room to bid farewell to the year in style? Nobu Hotel Warsaw offers an array of exquisite spaces to fulfill your festive desires, catering to gatherings **from 10 to 250 guests**. Join us in creating unforgettable holiday moments, tailored just for you.



OFFERS INCLUDE

- Your private and beautifully decorated Christmas tree
- Festive table decorations
- Welcome sparkling wine reception
- Champagne reception *(additional charge applies)*
- Personalized menu and place cards
- Background music *(live music available on request)*
- DJ set available *(additional charge applies)*

For more information, please contact
sales-warsaw@nobuhotels.com, +48 22 551 88 28

NOBU
Sundays

FESTIVE SANTA CLAUS FAMILY STYLE BRUNCH

December 8th | 12:30-3:30 PM *last seating*

Join us for an unforgettable festive brunch on Sunday, December 8th, surrounded by family and friends. Experience the magic as Santa Claus arrives, delighting both the young and the young at heart with special surprises, accompanied by live music and entertainment for the children. Feast on a family-style lunch featuring a sumptuous array of Nobu's globally renowned classic dishes. Cap off a splendid Sunday afternoon with a visit to our buffet, where our Pastry Chef's festive treats await to enchant your taste buds.

In cooperation with:





OFFER INCLUDES

Family style appetizers
served in the comfort of your table
Festive Dessert Buffet
Live Christmas Jazz Music
A visit from Santa Claus
Special children entertainment

350 PLN per person
for a gourmet food-only delight

450 PLN per person
for food, plus unlimited house beer
and wine to elevate your experience

600 PLN per person
All of the above benefits, plus exclusive
free flow Veuve Clicquot Brut Champagne
and a BMW home pick-up
and drop-off limousine service



S A K E B A R

Champagne

O R S A K E A F T E R N O O N T E A

Thursday to Saturday, 3-6 PM

As the city lights begin to twinkle and your shopping comes to an end, why not treat yourself to our renowned festive Champagne or Sake Afternoon Tea at Sakebar by Nobu?

O F F E R I N C L U D E S

Selection of Japanese inspired festive pastries
Chef's selection of finger sandwiches
Sushi bento box
Selection of tea or coffee
One glass of Veuve Clicquot Brut Champagne or Sake

180 PLN per person
including a selection of tea or coffee

220 PLN per person
including a glass of Veuve Clicquot Brut Champagne or Sake

Veuve Clicquot

C H R I S T M A S

Concert

A T S A K E B A R B Y N O B U

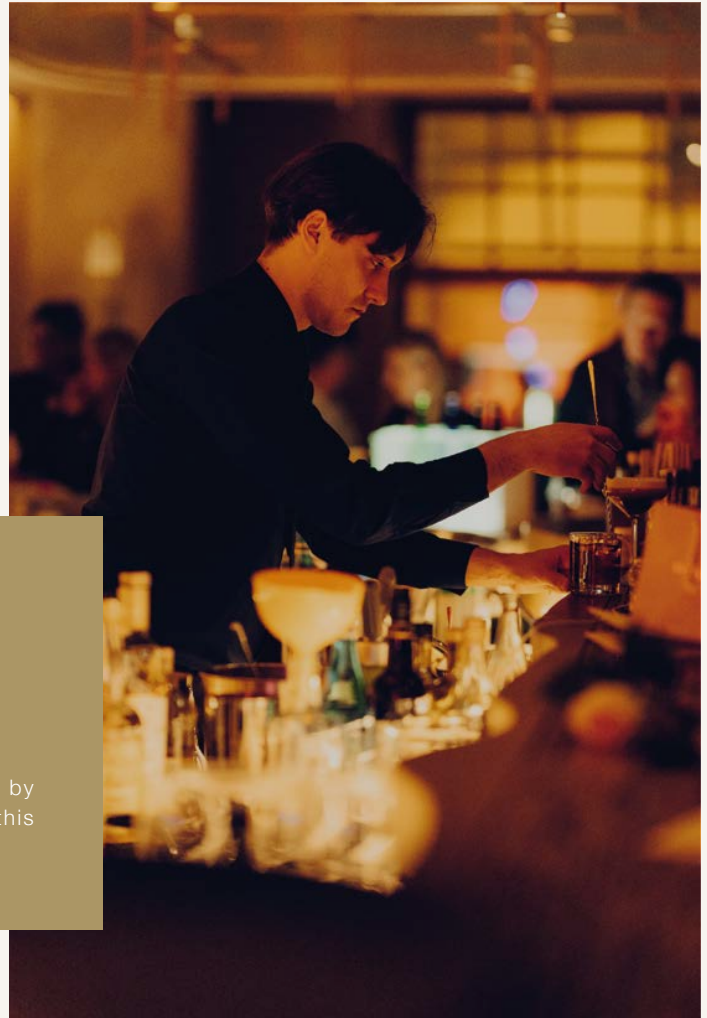
Celebrate the season with us on December 6th for a special Festive concert at Sakebar by Nobu. Starting at 8 PM, enjoy an evening filled with enchanting live music and a unique dining experience.

S P E C I A L H I G H L I G H T S

Exclusive festive concert starting at 8 PM

Special pre-concert menu available in the evening

Stay connected for more details and sneak peeks by following our social media channels. Don't miss out on this blend of culinary excellence and festive melodies!



FESTIVE
Omakase
MENU

This holiday season, Nobu Warsaw is excited to present our special Festive Omakase menus. It's your chance to indulge in Nobu's iconic dishes, each given a unique holiday twist that promises to elevate your dining experience.

NOBU'S EXCLUSIVE ADVENT CALENDAR

Beginning December 1st, indulge in our dinner service and immerse yourself in the Nobu Advent Calendar experience. This holiday season, guests have the opportunity to win exquisite Christmas surprises, thoughtfully chosen to enhance the festive joy.



OFFER DATES & DETAILS

Starting November 20th: Available daily from 6 to 10:45 PM.
Priced at 550 PLN per person and designed to perfectly complement your festive feast.

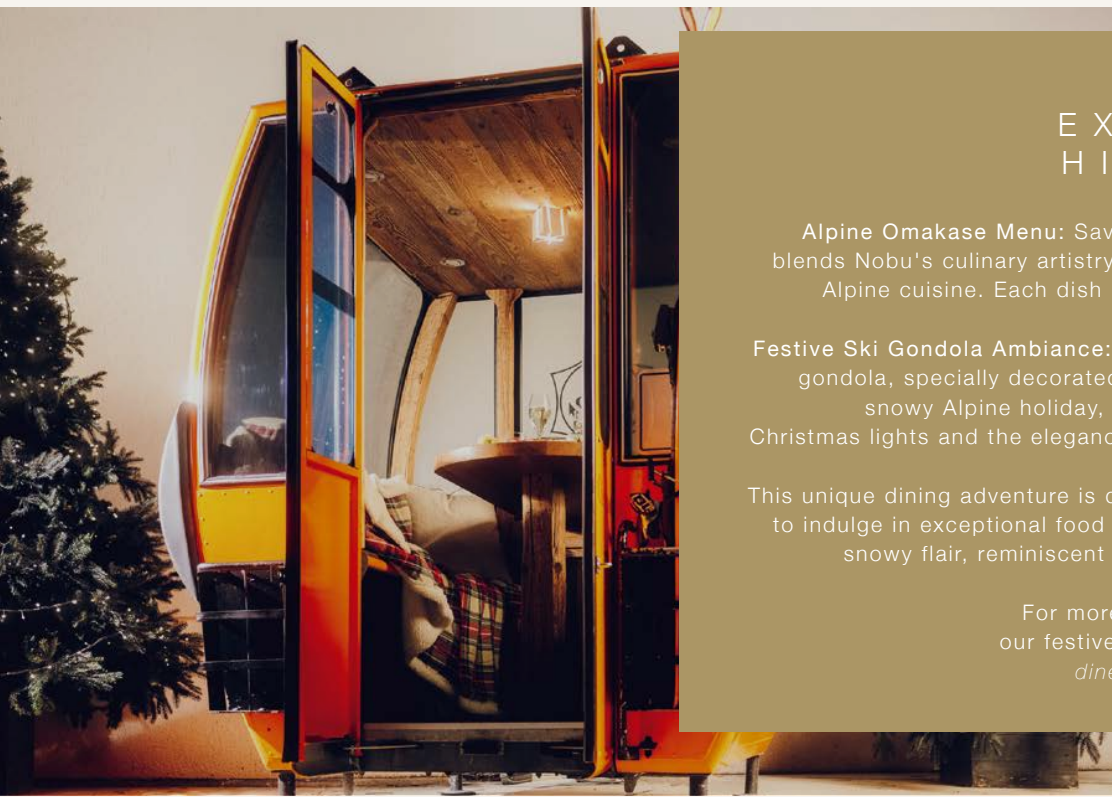
Special Holiday dates - December 24th and 25th. Join us from 6 to 10:45 PM to celebrate the heart of the holiday season.
Each guest will be greeted with a welcome glass of Veuve Clicquot Brut Champagne, adding a touch of luxury to your festive celebrations.

Alpine

O M A K A S E E X P E R I E N C E

This winter, escape to a culinary wonderland with a unique Alpine Omakase Experience, brought to you by Nobu in collaboration with Veuve Clicquot. Dive into a world where gourmet dining meets the charm of the Alpine winter, all within the unique setting of a Festive Ski Gondola.

Nestled at the Koszykowa entrance and surrounded by the sparkle of Christmas trees, our specially designed ski gondola setting offers an immersive alpine atmosphere, bringing the magic of snowy landscapes right to your table.



EXPERIENCE HIGHLIGHTS

Alpine Omakase Menu: Savor an exclusive menu that blends Nobu's culinary artistry with the rustic warmth of Alpine cuisine. Each dish is a celebration of flavors, crafted to perfection.

Festive Ski Gondola Ambiance: Dine in an enchanting ski gondola, specially decorated to capture the spirit of a snowy Alpine holiday, complete with the glow of Christmas lights and the elegance of a winter wonderland.

This unique dining adventure is designed for those looking to indulge in exceptional food while soaking in a festive, snowy flair, reminiscent of a serene alpine retreat.

For more information how to book our festive gondola, please contact:
dine-warsaw@nobuhotels.com

Veve Clicquot

Private

DINING ROOMS AND SAKEBAR BY NOBU

Celebrate Christmas with flair at Nobu, choosing from our private dining rooms or the Sakebar by Nobu. Opt for an intimate gathering of up to 15 guests in our cozy private dining room, host up to 50 guests in our spacious dining area, or enjoy the Sakebar by Nobu, which can welcome up to 55 guests.



OFFERS INCLUDE

Festive decorations at your table
Beautifully decorated Christmas tree
Customized, or pre-set menus
Personalized menu and place cards
Background Music
*live music upon request,
large private dining room only*

For more information, please contact
dine-warsaw@nobuhotels.com, +48 22 551 88 00

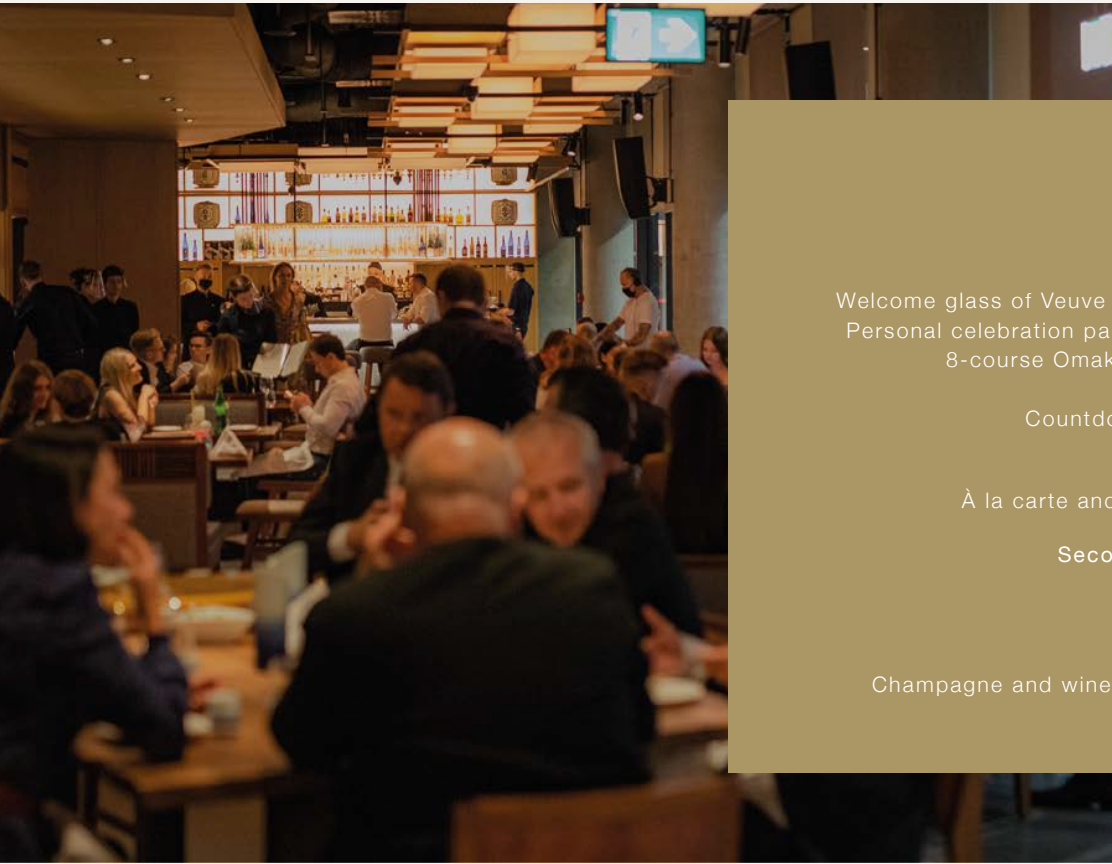
Veve Clicquot

New Year's Eve

AT NOBU RESTAURANT

December 31st | 6 PM- 2 AM

As we bid farewell to the year, Nobu Warsaw Restaurant invites you to an extraordinary celebration marked by an enchanting carnival theme and the vibrant sounds of a live band. Immerse yourself in an evening that promises to whisk you away into a night of festive elegance, ready to welcome the New Year with open arms and unforgettable moments.



OFFER INCLUDES

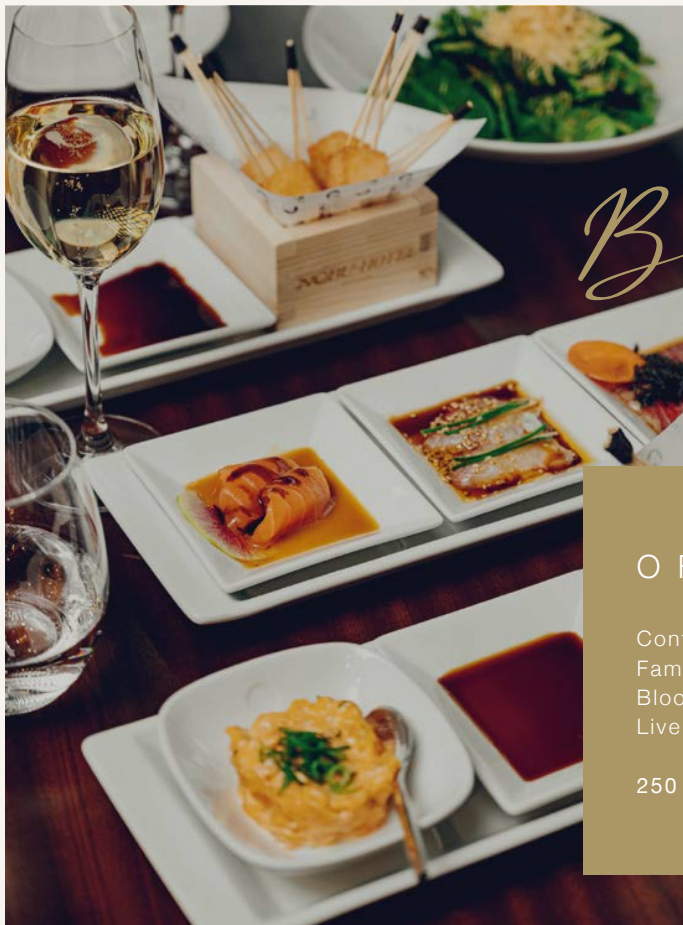
Welcome glass of Veuve Clicquot Brut Champagne
Personal celebration party novelties on your table
8-course Omakase New Year's Eve menu
Live Band
Countdown and midnight surprise

First seating 6-8:30 PM
À la carte and Omakase menu available

Second seating 9 PM to close
Omakase menu only

1.500 PLN per person
including all of the above
Champagne and wine pre-orders recommended

Veuve Clicquot



NEW YEAR'S
DAY

Brunch

To ring in the New Year, we invite you
to enjoy our extended breakfast, available until 1 pm.

OFFER INCLUDES

Continental breakfast buffet
Famous Nobu Breakfast Classics
Bloody Mary welcome drink
Live Jazz Music

250 PLN per person

Veve Clicquot

A C C O M M O D A T I O N

offers

Embrace the New Year's Eve in elegance
with our special room packages at Nobu Hotel Warsaw.

This offer is valid for stays on Friday, Saturday
and Sunday nights throughout December 2024,
as well as New Year's Eve and includes:

Sumptuous sparkling wine
breakfast served at Nobu Restaurant
SPA credit of 100 PLN per person, per room
Christmas welcome amenities in your room
One glass of Veuve Clicquot Brut Champagne
per person upon arrival
Complimentary late check out until 4 PM
(subjected to availability)

For more information, please contact
reserve-warsaw@nobuhotels.com, +48 22 551 88 51

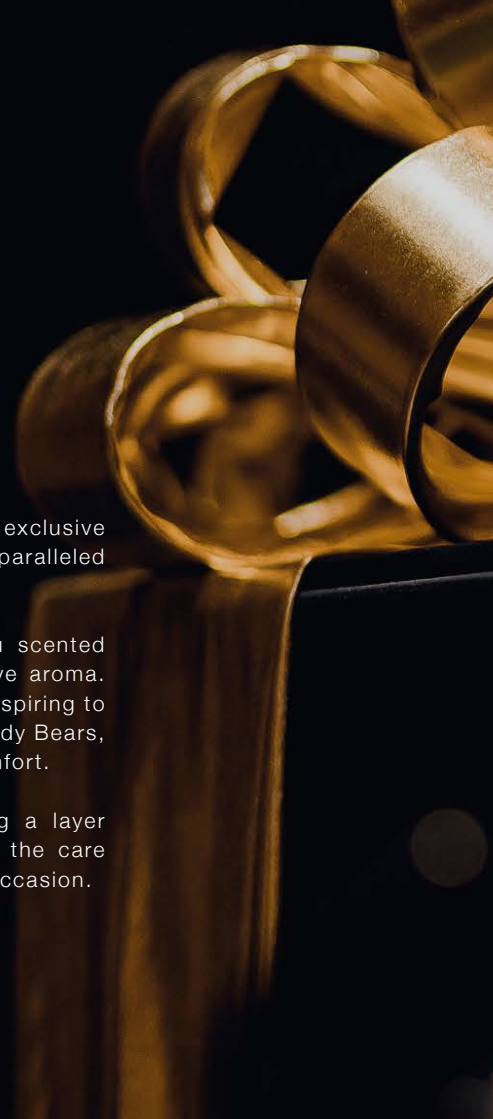


FESTIVE
Gift
IDEAS AT NOBU

Discover the essence of Nobu in every gift. Visit our online gift shop for exclusive personalized gift certificates, perfect for those who cherish unparalleled experiences.

Elevate your home's ambiance with our elegantly handcrafted Nobu scented candles and room sprays, infusing your space with a signature festive aroma. Dive into the culinary world with our Nobu Cookbooks, ideal for those aspiring to recreate our iconic dishes. And for our younger fans, we offer Nobu Teddy Bears, specially designed for kids to enjoy a touch of Nobu's warmth and comfort.

Don't forget to explore our luxurious bathrobes, perfect for adding a layer of sophistication to your daily routine. Each product is crafted with the care and quality that Nobu is known for, making them perfect gifts for any occasion.





Veuve Clicquot

FOR ANY INQUIRES OR BOOKINGS,
PLEASE CONTACT:

Wilcza 73, Warsaw 00-670, Poland
+48 22 551 88 88

warsaw.nobuhotels.com